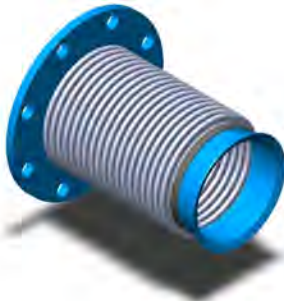


# WAUKESHA ISOLATORS

## WAUKESHA FACTORY REPLACEMENT BELLOWS

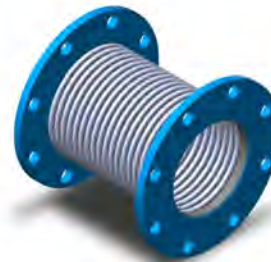
### TYPE 41W - ANSI FLANGE X 20 DEG LIP FLANGE

T-321 STAINLESS STEEL BELLOWS  
T-321 STAINLESS STEEL WAUKESHA LIP FLANGE  
125/150# ANSI OUTLET FLANGE, A-36 CARBON STEEL



### TYPE 42 - FIXED X FIXED FLANGE (ANSI)

T-321 STAINLESS STEEL BELLOWS  
125/150# ANSI INLET FLANGE, A-36 CARBON STEEL  
125/150# ANSI OUTLET FLANGE, A-36 CARBON STEEL



#### TYPE 41W - MULTI-PLY / SINGLE-PLY BELLOWS

SIZE	OVERALL LENGTH	LIP O.D.	FLG. O.D.	MULTI-PLY	SINGLE-PLY
5"	8.00	6.13	10.00	41M0500-8W	41S0500-8W
6"	8.00	6.75	11.00	41M0600-8W	41S0600-8W
8"	8.00	9.00	13.50	41M0800-8W	41S0800-8W
12"	8.00	13.00	19.00	41M1200-8W	41S1200-8W
14"	8.00	15.13	21.00	41M1400-8W	41S1400-8W

#### TYPE 42 - MULTI-PLY / SINGLE-PLY BELLOWS

SIZE	OVERALL LENGTH	FLG. O.D.	FLG. O.D.	MULTI-PLY	SINGLE-PLY
5"	8.00	10.00	10.00	42M0500-8	42S0500-8
6"	8.00	11.00	11.00	42M0600-8	42S0600-8
8"	8.00	13.50	13.50	42M0800-8	42S0800-8
10"	8.00	16.00	16.00	42M0500-8	42S0500-8
12"	8.00	19.00	19.00	42M1200-8	42S1200-8
14"	8.00	21.00	21.00	42M1400-8	42S1400-8

### TYPE 41LW - ANSI FLANGE X 20 DEG LIP FLANGE

T-321 STAINLESS STEEL BELLOWS  
T-321 STAINLESS STEEL WAUKESHA LIP FLANGE  
125/150# ANSI OUTLET FLANGE, A-36 CARBON STEEL  
T-321 STAINLESS STEEL FLOW LINER



### TYPE 42L - FIXED X FIXED FLANGE (ANSI)

T-321 STAINLESS STEEL BELLOWS  
125/150# ANSI INLET FLANGE, A-36 CARBON STEEL  
125/150# ANSI OUTLET FLANGE, A-36 CARBON STEEL  
T-321 STAINLESS STEEL FLOW LINER



#### TYPE 41LW - MULTI-PLY / SINGLE-PLY BELLOWS W/ LINER

SIZE	OVERALL LENGTH	LIP O.D.	FLG. O.D.	MULTI-PLY	SINGLE-PLY
5"	8.00	6.13	10.00	41M0500-8LW	41S0500-8LW
6"	8.00	6.75	11.00	41M0600-8LW	41S0600-8LW
8"	8.00	9.00	13.50	41M0800-8LW	41S0800-8LW
12"	8.00	13.00	19.00	41M1200-8LW	41S1200-8LW
14"	8.00	15.13	21.00	41M1400-8LW	41S1400-8LW

#### TYPE 42L - MULTI-PLY / SINGLE-PLY BELLOWS W/ LINER

SIZE	OVERALL LENGTH	FLG. O.D.	FLG. O.D.	MULTI-PLY	SINGLE-PLY
5"	8.00	10.00	10.00	42M0500-8L	42S0500-8L
6"	8.00	11.00	11.00	42M0600-8L	42S0600-8L
8"	8.00	13.50	13.50	42M0800-8L	42S0800-8L
10"	8.00	16.00	16.00	42M0500-8L	42S0500-8L
12"	8.00	19.00	19.00	42M1200-8L	42S1200-8L
14"	8.00	21.00	21.00	42M1400-8L	42S1400-8L

#### OPTIONS:

- Longer / Shorter Lengths
- Increasing / Reducing Flanges
- T-304, T-316, and T-321 Stainless Steel Flanges
- Inconel 625 and Alloy "X" Bellows
- Venturi Liner

#### NOTES:

- Standard Flow Liner Diameter limits Lateral Offset to 3/8". For Increased Offset, Liner O.D. Must be Reduced.
- Internal Flow Liners are Required if Flow Conditions are Equal or Greater Than the Following:

6" and Under (Gas / Steam) - 4ft/sec/inch of Diameter  
8" and Over (Gas / Steam) - 25ft/sec.

Contact One Of Our Product Specialists For Assistance

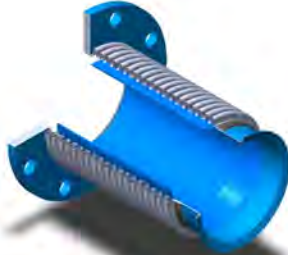


# WAUKESHA ISOLATORS

## WAUKESHA FACTORY REPLACEMENT BELLOWS

### TYPE 41LWX - ANSI FLOATING FLANGE X LIP FLG.

T-321 STAINLESS STEEL BELLOWS  
T-321 STAINLESS STEEL WAUKESHA LIP FLANGE  
125/150# ANSI OUTLET FLANGE, A-36 CARBON STEEL  
T-321 STAINLESS STEEL FLOW LINER



### TYPE 42LX - FIXED X FLOATING FLANGE (ANSI)

T-321 STAINLESS STEEL BELLOWS  
125/150# ANSI INLET FLANGE, A-36 CARBON STEEL  
125/150# ANSI OUTLET FLANGE, A-36 CARBON STEEL  
T-321 STAINLESS STEEL FLOW LINER



### TYPE 41LWX - MULTI-PLY / SINGLE-PLY BELLOWS W/ LINER

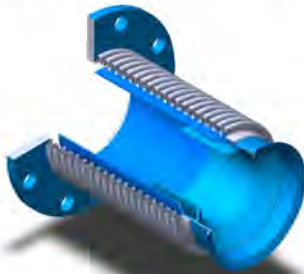
SIZE	OVERALL LENGTH	LIP O.D.	FLG. O.D.	MULTI-PLY	SINGLE-PLY
5"	8.00	6.13	10.00	41M0500-8LWX	41S0500-8LWX
6"	8.00	6.75	11.00	41M0600-8LWX	41S0600-8LWX
8"	8.00	9.00	13.50	41M0800-8LWX	41S0800-8LWX
12"	8.00	13.00	19.00	41M1200-8LWX	41S1200-8LWX
14"	8.00	15.13	21.00	41M1400-8LWX	41S1400-8LWX

### TYPE 42LX - MULTI-PLY / SINGLE-PLY BELLOWS W/ LINER

SIZE	OVERALL LENGTH	FLG. O.D.	FLG. O.D.	MULTI-PLY	SINGLE-PLY
5"	8.00	10.00	10.00	42M0500-8LX	42S0500-8LX
6"	8.00	11.00	11.00	42M0600-8LX	42S0600-8LX
8"	8.00	13.50	13.50	42M0800-8LX	42S0800-8LX
10"	8.00	16.00	16.00	42M0500-8LX	42S0500-8LX
12"	8.00	19.00	19.00	42M1200-8LX	42S1200-8LX
14"	8.00	21.00	21.00	42M1400-8LX	42S1400-8LX

### TYPE 43LWX - ANSI FLANGE X 20 DEG LIP FLANGE

T-321 STAINLESS STEEL BELLOWS  
T-321 STAINLESS STEEL WAUKESHA LIP FLANGE  
125/150# ANSI OUTLET FLANGE, A-36 CARBON STEEL  
T-321 STAINLESS STEEL FLOW LINER



"Type 43LWX Bellows with Venturi"

### TYPE 43LWX - MULTI-PLY / SINGLE-PLY BELLOWS W/ LINER

SIZE	OVERALL LENGTH	LIP O.D.	FLG. O.D.	LINER O.D.	VENTURI O.D.	MULTI-PLY	SINGLE-PLY
6"	7.62	6.75	11.00	5.38	4.50	43M0600-8LWX	43S0600-8LWX

#### OPTIONS:

- Longer / Shorter Lengths
- Increasing / Reducing Flanges
- T-304, T-316, and T-321 Stainless Steel Flanges
- Inconel 625 and Alloy "X" Bellows

#### NOTES:

- For Optional "Venturi", Consult the Factory.
- Standard Flow Liner Diameter limits Lateral Offset to 3/8". For Increased Offset, Liner O.D. Must be Reduced.
- Internal Flow Liners are Required if Flow Conditions are Equal or Greater Than the Following:

6" and Under (Gas / Steam) - 4ft/sec/inch of Diameter  
8" and Over (Gas / Steam) - 25ft/sec.

Contact One Of Our Product Specialists For Assistance

