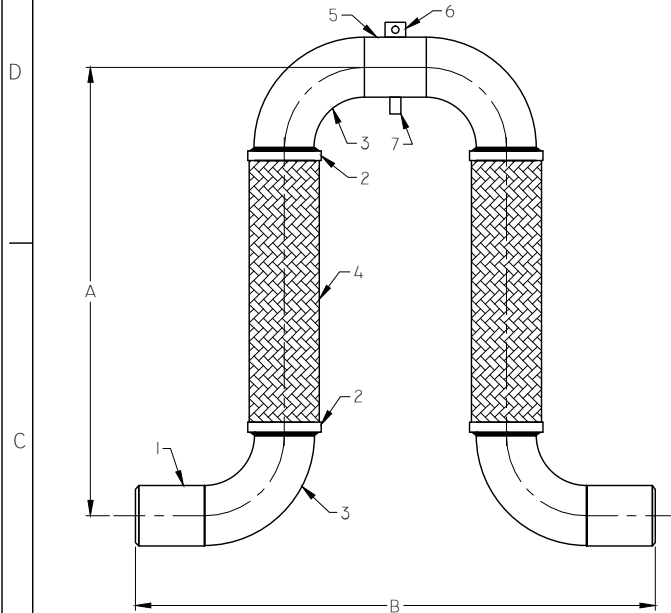


THIS DOCUMENT IS THE PROPERTY OF DME INC., AND CANNOT BE DISTRIBUTED WITHOUT DME'S AUTHORIZATION

REVISIONS				
ZONE	REV.	DESCRIPTION	DATE	APPROVED

BILL OF MATERIAL

ITEM	QTY	DESCRIPTION	MATERIAL
1	2	37-1/2° WELD END, SCH. 40 STEEL	A 53-E GR.B
2	4	BRAID COLLAR	A 240 T-304
3	4	STD. WT. L.R. 90° WELD ELBOW	A 234 GR.WPB
4A	2	METAL CONVOLUTED HOSE	A 240 T-321
4B	2	METAL BRAID	A 240 T-304
5	1	STD. WT. PIPE SPACER	A 53-E GR.B
6	1	LIFTING LUG, (PROVIDED ON 4" THRU 12")	C/S
7	1	OPTIONAL DRAIN PLUG UPON REQUEST	C/S



SEISMIC CONNECTOR
FOR ±3" EACH LEG OF MOTION IN ANY PLANE.

SIZE	A	B	ASSEMBLY PART NUMBER
2"	27.50"	21.00"	DM8246-0200-3
2-1/2"	30.75"	23.00"	DM8246-0250-3
3"	33.00"	25.00"	DM8246-0300-3
4"	38.25"	30.00"	DM8246-0400-3
5"	42.75"	36.00"	DM8246-0500-3
6"	48.50"	42.00"	DM8246-0600-3
8"	62.00"	54.00"	DM8246-0800-3
10"	69.00"	66.00"	DM8246-1000-3
12"	76.00"	78.00"	DM8246-1200-3

GENERAL NOTES:

- A. ALL WELDING T.I.G. (HELI-ARC) IN ACCORDANCE WITH ASME SECTION IX.
- B. PRESSURE TEST ALL ASSEMBLIES AIR UNDER WATER AFTER FABRICATION, NO LEAKAGE.
- C. AFTER A SEISMIC OCCURENCE, THE SEISMIC EXPANSION JOINTS AND FLEX CONNECTORS MUST BE INSPECTED FOR DAMAGE AND REPLACED IF NECESSARY.
- D. TO PREVENT SAGGING, USE SPRING HANGER.

APPROVED BY:.....

DATE:..... PO#:.....

ALL DIMENSIONS ARE IN INCHES



DME INC.
14001 MARQUARDT AVE.
SANTA FE SPRINGS, CA
90670
TEL: 562-921-0464
FAX: 562-802-7489

ANY CHANGES ON THE
DRAWING MUST BE
REPORTED AND APPROVED
ONLY BY
THE ENGINEERING DEPARTMENT

CUST: JOB#			180° SEISMIC CONNECTOR W/ 37-1/2° WELD ENDS			UNLESS OTHERWISE SPECIFIED TOLERANCES ARE :		
DESIGN: PER CUST.	12-01-03	SIZE	DWG NO. DM8246-3		REV.	.XXX ± .010"	FRACTIONS: ± 1/8"	
APPROVED BY: E.F.	12-01-03	SCALE	DATE: 12-01-03		SHT	.XX ± .030"	EXP. JOINTS:	
DWG: M.N.	12-01-03	NONE			1 OF 1	.X ± .060"	OAL: ± 1/8"	
						ANGLES ± 1/2°		