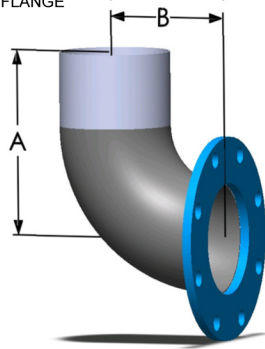


EXHAUST OUTLET EXTENSIONS

EOT - 90° FLANGED TUBE ELBOW

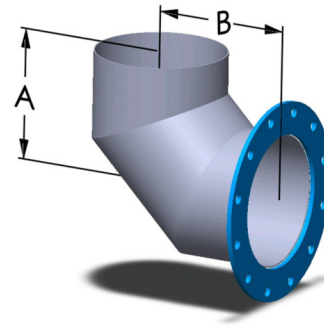
90 DEGREE SHORT RADIUS TUBE ELBOW
125/150# ANSI FIXED FLANGE



SIZE	A	B	FLG. O.D.	BOLT CIRCLE	CARBON STEEL	T-304 S/S
2"	6.00	2.50	6.00	4.75	EOT-0200-6	EOT-0200-6H
2-1/2"	6.50	3.00	7.00	5.50	EOT-0250-6.5	EOT-0250-6.5H
3"	7.00	3.50	7.50	6.00	EOT-0300-7	EOT-0300-7H
3-1/2"	7.50	4.00	8.50	7.00	EOT-0350-7.5	EOT-0350-7.5H
4"	8.00	4.50	9.00	7.50	EOT-0400-8	EOT-0400-8H
5"	9.50	6.00	10.00	8.50	EOT-0500-9.5	EOT-0500-9.5H
6"	10.00	6.50	11.00	9.50	EOT-0600-10	EOT-0600-10H
8"	14.00	10.38	13.50	11.75	EOT-0800-14	EOT-0800-14H
10"	14.00	11.50	16.00	14.25	EOT-1000-14	EOT-1000-14H
12"	16.00	12.50	19.00	17.00	EOT-1200-16	EOT-1200-16H

EOM - 90° FLANGED TUBE MITERED ELBOW

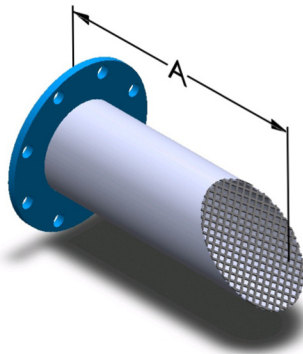
90 DEGREE SHORT RADIUS MITERED TUBE ELBOW
125/150# ANSI FIXED FLANGE



SIZE	A	B	FLG. O.D.	BOLT CIRCLE	CARBON STEEL	T-304 S/S
14"	18.00	14.50	21.00	18.75	EOM-1400-18	EOM-1400-18H
16"	20.00	16.50	23.50	21.25	EOM-1600-20	EOM-1600-20H
18"	22.00	18.50	25.00	22.75	EOM-1800-22	EOM-1800-22H
20"	24.00	20.50	27.50	25.00	EOM-2000-24	EOM-2000-24H
22"	26.00	22.50	29.50	27.25	EOM-2200-26	EOM-2200-26H
24"	28.00	24.50	32.00	29.50	EOM-2400-28	EOM-2400-28H
26"	30.00	26.50	34.25	31.75	EOM-2600-30	EOM-2600-30H
28"	32.00	28.50	36.50	34.00	EOM-2800-32	EOM-2800-32H
30"	34.00	30.50	38.75	36.00	EOM-3000-34	EOM-3000-34H
36"	40.00	36.50	46.00	42.75	EOM-3600-40	EOM-3600-40H

EMS - 45° MITERED OUTLET EXTENSION

TUBE X 90 DEGREE CUT OUTLET
125/150# ANSI FIXED FLANGE



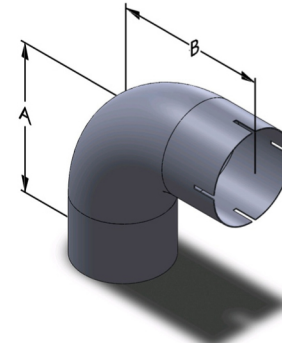
SIZE	A	FLG. O.D.	BOLT CIRCLE	CARBON STEEL	T-304 S/S
3"	18.00	7.50	6.00	EMS-0300-18	EMS-0300-18H
3-1/2"	18.00	8.50	7.00	EMS-0350-18	EMS-0350-18H
4"	18.00	9.00	7.50	EMS-0400-18	EMS-0400-18H
5"	18.00	10.00	8.50	EMS-0500-18	EMS-0500-18H
6"	18.00	11.00	9.50	EMS-0600-18	EMS-0600-18H
8"	18.00	13.50	11.75	EMS-0800-18	EMS-0800-18H
10"	20.00	16.00	14.25	EMS-1000-20	EMS-1000-20H
12"	24.00	19.00	17.00	EMS-1200-24	EMS-1200-24H
14"	24.00	21.00	18.75	EMS-1400-24	EMS-1400-24H
16"	28.00	23.50	21.25	EMS-1600-28	EMS-1600-28H
18"	30.00	25.00	22.75	EMS-1800-30	EMS-1800-30H
20"	34.00	27.50	25.00	EMS-2000-34	EMS-2000-34H
22"	36.00	29.50	27.25	EMS-2200-36	EMS-2200-36H
24"	40.00	32.00	29.50	EMS-2400-40	EMS-2400-40H

NOTES:

- For BirdScreen, Change the Part Number to "EMSB".

ECS - SLOTTED CUFF X TUBE

90 DEGREE SHORT RADIUS TUBE ELBOW
SLOTTED CUFF (PIPE OR TUBE) INLET
TUBE SIZE OUTLET



SIZE	A	B	CUFF I.D.	RAD.	CARBON STEEL	T-304 S/S
2" TUBE	6.00	6.00	2.040	2.00	ECS-0200-6T	ECS-0200-6HT
2.50" TUBE	6.50	6.50	2.540	2.50	ECS-0250-6.5T	ECS-0250-6.5HT
3" TUBE	7.00	7.00	3.040	3.00	ECS-0300-7T	ECS-0300-7HT
3" PIPE	7.00	7.00	3.540	3.50	ECS-0350-7P	ECS-0350-7HP
4" TUBE	8.00	8.00	4.040	4.00	ECS-0400-8T	ECS-0400-8HT
4" PIPE	8.00	8.00	4.540	4.00	ECS-0400-8P	ECS-0400-8HP
5" TUBE	9.50	9.50	5.040	5.50	ECS-0500-9.5T	ECS-0500-9.5HT
5" PIPE	9.50	9.50	5.603	5.50	ECS-0500-9.5P	ECS-0500-9.5HP
6" TUBE	10.00	10.00	6.040	6.00	ECS-0600-10T	ECS-0600-10HT
6" PIPE	10.00	10.00	6.665	6.00	ECS-0600-10P	ECS-0600-10HP
8" TUBE	14.00	13.88	8.060	9.88	ECS-0800-14T	ECS-0800-14HT
8" PIPE	14.00	13.88	8.665	9.88	ECS-0800-14P	ECS-0800-14HP
10" TUBE	14.00	14.00	10.060	11.00	ECS-1000-14T	ECS-1000-14HT
10" PIPE	14.00	14.00	10.810	11.00	ECS-1000-14P	ECS-1000-14HP
12" TUBE	16.00	16.00	12.060	12.00	ECS-1200-16T	ECS-1200-16HT
12" PIPE	16.00	16.00	12.810	12.00	ECS-1200-16P	ECS-1200-16HP

Contact One Of Our Product Specialists For Assistance

