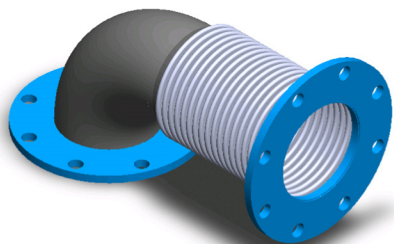


# VIBRATION ISOLATORS

## TYPE 10 - FLANGED 90 DEG. ELBOW X FLANGE

T-321 STAINLESS STEEL BELLOWS / FLEX  
125/150# ANSI FLANGE, A-36 STEEL EACH END  
CARBON STEEL 90 DEGREE SHORT RADIUS TUBE ELBOW



## TYPE 11 - FLANGE X 90 DEG. TURBO FLANGE

T-321 STAINLESS STEEL BELLOWS / FLEX  
125/150# ANSI FLANGE, A-36 STEEL ONE END / DETROIT TURBO FLANGE OTHER END  
CARBON STEEL 90 DEGREE SHORT RADIUS TUBE ELBOW



### TYPE 10 - MULTI-PLY BELLOWS

SIZE	OVERALL LENGTH	LIVE LENGTH	O.D.	BOLT CIRCLE	HOLE DIA.	C/L DIM.	PART NUMBER
3"	13.75	9.00	7.50	6.00	0.75	3.25	10M0300-13.75
3-1/2"	14.25	9.00	8.50	7.00	0.75	3.75	10M0350-14.25
4"	14.75	9.00	9.00	7.50	0.75	4.25	10M0400-14.75
5"	16.25	9.00	10.00	8.50	0.88	5.75	10M0500-16.25
6"	16.75	9.00	11.00	9.50	0.88	6.25	10M0600-16.75
8"	20.75	9.00	13.50	11.75	0.88	10.13	10M0800-20.75
10"	21.75	9.00	16.00	14.25	1.00	11.25	10M1000-21.75
12"	22.75	9.00	19.00	17.00	1.00	12.25	10M1200-22.75

### TYPE 11 - MULTI-PLY BELLOWS

SIZE	OVERALL LENGTH	LIVE LENGTH	O.D.	BOLT CIRCLE	HOLE DIA.	C/L DIM.	PART NUMBER
3-1/2"	14.25	9.00	8.50	7.00	0.75	4.25	11M0350-14.25
4"	14.75	9.00	9.00	7.50	0.75	4.75	11M0400-14.75
5"	16.25	9.00	10.00	8.50	0.88	6.25	11M0500-16.25
6"	16.75	9.00	11.00	9.50	0.88	6.75	11M0600-16.75

### TYPE 10 - SINGLE-PLY BELLOWS

SIZE	OVERALL LENGTH	LIVE LENGTH	O.D.	BOLT CIRCLE	HOLE DIA.	C/L DIM.	PART NUMBER
3"	13.75	9.00	7.50	6.00	0.75	3.25	10S0300-13.75
3-1/2"	14.25	9.00	8.50	7.00	0.75	3.75	10S0350-14.25
4"	14.75	9.00	9.00	7.50	0.75	4.25	10S0400-14.75
5"	16.25	9.00	10.00	8.50	0.88	5.75	10S0500-16.25
6"	16.75	9.00	11.00	9.50	0.88	6.25	10S0600-16.75
8"	20.75	9.00	13.50	11.75	0.88	10.13	10S0800-20.75
10"	21.75	9.00	16.00	14.25	1.00	11.25	10S1000-21.75
12"	22.75	9.00	19.00	17.00	1.00	12.25	10S1200-22.75

### TYPE 11 - SINGLE-PLY BELLOWS

SIZE	OVERALL LENGTH	LIVE LENGTH	O.D.	BOLT CIRCLE	HOLE DIA.	C/L DIM.	PART NUMBER
3-1/2"	14.25	9.00	8.50	7.00	0.75	4.25	11S0350-14.25
4"	14.75	9.00	9.00	7.50	0.75	4.75	11S0400-14.75
5"	16.25	9.00	10.00	8.50	0.88	6.25	11S0500-16.25
6"	16.75	9.00	11.00	9.50	0.88	6.75	11S0600-16.75

### TYPE 10 - FLEX HOSE

SIZE	OVERALL LENGTH	LIVE LENGTH	O.D.	BOLT CIRCLE	HOLE DIA.	C/L DIM.	PART NUMBER
3"	20.75	17.00	7.50	6.00	0.75	3.25	10F0300-20.75
3-1/2"	21.25	17.00	8.50	7.00	0.75	3.75	10F0350-21.25
4"	21.75	17.00	9.00	7.50	0.75	4.25	10F0400-21.75
5"	23.25	17.00	10.00	8.50	0.88	5.75	10F0500-23.25
6"	23.75	17.00	11.00	9.50	0.88	6.25	10F0600-23.75
8"	27.75	17.00	13.50	11.75	0.88	10.13	10F0800-27.75
10"	28.75	17.00	16.00	14.25	1.00	11.25	10F1000-28.75
12"	29.75	17.00	19.00	17.00	1.00	12.25	10F1200-29.75

### TYPE 11 - FLEX HOSE

SIZE	OVERALL LENGTH	LIVE LENGTH	O.D.	BOLT CIRCLE	HOLE DIA.	C/L DIM.	PART NUMBER
3-1/2"	22.25	9.00	8.50	7.00	0.75	4.25	11F0350-22.25
4"	22.75	9.00	9.00	7.50	0.75	4.75	11F0400-22.75
5"	24.25	9.00	10.00	8.50	0.88	6.25	11F0500-24.25
6"	24.75	9.00	11.00	9.50	0.88	6.75	11F0600-24.75

See pages 4-6 for bellows and flex hose specifications.

\* Contact us for Turbo Flange Dimensions

#### OPTIONS:

- Longer / Shorter Lengths
- Increasing / Reducing Flanges
- Special Drilled / Metric Flanges
- Cummins and Detroit Flanges
- T-304, T-316, and T-321 Stainless Steel Flanges
- Inconel 625 and Alloy "X" Bellows

#### NOTES:

- Standard Flow Liner Diameter limits Lateral Offset to 3/8". For Increased Offset, Liner O.D. Must be Reduced.
- Internal Flow Liners are Required if Flow Conditions are Equal or Greater Than the Following:

6" and Under (Gas / Steam) - 4ft/sec/inch of Diameter  
8" and Over (Gas / Steam) - 25ft/sec.

Contact One Of Our Product Specialists For Assistance

