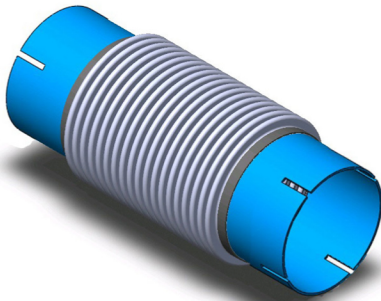


VIBRATION ISOLATORS

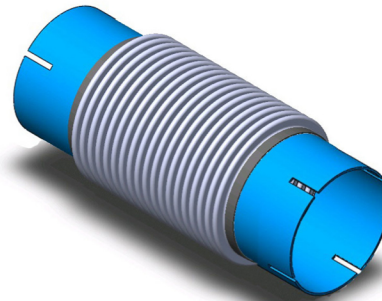
TYPE 9T - SLOTTED CUFF EACH END

T-321 STAINLESS STEEL BELLOWS / FLEX
TUBE SIZE SLOTTED CUFF EACH END



TYPE 9P - SLOTTED CUFF EACH END

T-321 STAINLESS STEEL BELLOWS / FLEX
PIPE SIZE SLOTTED CUFF EACH END



TYPE 9T - MULTI-PLY BELLOWS

SIZE	OVERALL LENGTH	LIVE LENGTH	CUFF LENGTH	CUFF I.D.	W/ C/S CUFF	W/ S/S CUFF
1-1/2"	14.00	6.00	4.00	1.54	9M0150-14T	9M0150-14HT
2"	14.00	6.00	4.00	2.04	9M0200-14T	9M0200-14HT
2-1/2"	14.00	6.00	4.00	2.54	9M0250-14T	9M0250-14HT
3"	17.00	9.00	4.00	3.04	9M0300-17T	9M0300-17HT
3-1/2"	17.00	9.00	4.00	3.54	9M0350-17T	9M0350-17HT
4"	17.00	9.00	4.00	4.04	9M0400-17T	9M0400-17HT
5"	17.00	9.00	4.00	5.04	9M0500-17T	9M0500-17HT
6"	17.00	9.00	4.00	6.04	9M0600-17T	9M0600-17HT
8"	17.00	9.00	4.00	8.04	9M0800-17T	9M0800-17HT
10"	17.00	9.00	4.00	10.04	9M1000-17T	9M1000-17HT
12"	17.00	9.00	4.00	12.04	9M1200-17T	9M1200-17HT

TYPE 9P - MULTI-PLY BELLOWS

SIZE	OVERALL LENGTH	LIVE LENGTH	CUFF LENGTH	CUFF I.D.	W/ C/S CUFF	W/ S/S CUFF
1-1/2"	14.00	6.00	4.00	1.92	9M0150-14P	9M0150-14HP
2"	14.00	6.00	4.00	2.42	9M0200-14P	9M0200-14HP
2-1/2"	14.00	6.00	4.00	2.92	9M0250-14P	9M0250-14HP
3"	17.00	9.00	4.00	3.54	9M0300-17P	9M0300-17HP
3-1/2"	17.00	9.00	4.00	4.04	9M0350-17P	9M0350-17HP
4"	17.00	9.00	4.00	4.54	9M0400-17P	9M0400-17HP
5"	17.00	9.00	4.00	5.62	9M0500-17P	9M0500-17HP
6"	17.00	9.00	4.00	6.67	9M0600-17P	9M0600-17HP
8"	17.00	9.00	4.00	8.67	9M0800-17P	9M0800-17HP
10"	17.00	9.00	4.00	10.79	9M1000-17P	9M1000-17HP
12"	17.00	9.00	4.00	12.79	9M1200-17P	9M1200-17HP

TYPE 9T - SINGLE-PLY BELLOWS

SIZE	OVERALL LENGTH	LIVE LENGTH	CUFF LENGTH	CUFF I.D.	W/ C/S CUFF	W/ S/S CUFF
1-1/2"	14.00	6.00	4.00	1.54	9S0150-14T	9S0150-14HT
2"	14.00	6.00	4.00	2.04	9S0200-14T	9S0200-14HT
2-1/2"	14.00	6.00	4.00	2.54	9S0250-14T	9S0250-14HT
3"	17.00	9.00	4.00	3.04	9S0300-17T	9S0300-17HT
3-1/2"	17.00	9.00	4.00	3.54	9S0350-17T	9S0350-17HT
4"	17.00	9.00	4.00	4.04	9S0400-17T	9S0400-17HT
5"	17.00	9.00	4.00	5.04	9S0500-17T	9S0500-17HT
6"	17.00	9.00	4.00	6.04	9S0600-17T	9S0600-17HT
8"	17.00	9.00	4.00	8.04	9S0800-17T	9S0800-17HT
10"	17.00	9.00	4.00	10.04	9S1000-17T	9S1000-17HT
12"	17.00	9.00	4.00	12.04	9S1200-17T	9S1200-17HT

TYPE 9P - SINGLE-PLY BELLOWS

SIZE	OVERALL LENGTH	LIVE LENGTH	CUFF LENGTH	CUFF I.D.	W/ C/S CUFF	W/ S/S CUFF
1-1/2"	14.00	6.00	4.00	1.92	9S0150-14P	9S0150-14HP
2"	14.00	6.00	4.00	2.42	9S0200-14P	9S0200-14HP
2-1/2"	14.00	6.00	4.00	2.92	9S0250-14P	9S0250-14HP
3"	17.00	9.00	4.00	3.54	9S0300-17P	9S0300-17HP
3-1/2"	17.00	9.00	4.00	4.04	9S0350-17P	9S0350-17HP
4"	17.00	9.00	4.00	4.54	9S0400-17P	9S0400-17HP
5"	17.00	9.00	4.00	5.62	9S0500-17P	9S0500-17HP
6"	17.00	9.00	4.00	6.67	9S0600-17P	9S0600-17HP
8"	17.00	9.00	4.00	8.67	9S0800-17P	9S0800-17HP
10"	17.00	9.00	4.00	10.79	9S1000-17P	9S1000-17HP
12"	17.00	9.00	4.00	12.79	9S1200-17P	9S1200-17HP

TYPE 9T - FLEX HOSE

SIZE	OVERALL LENGTH	LIVE LENGTH	CUFF LENGTH	CUFF I.D.	W/ C/S CUFF	W/ S/S CUFF
1-1/2"	20.00	12.00	4.00	1.54	9F0150-20T	9F0150-20HT
2"	20.00	12.00	4.00	2.04	9F0200-20T	9F0200-20HT
2-1/2"	20.00	12.00	4.00	2.54	9F0250-20T	9F0250-20HT
3"	25.00	17.00	4.00	3.04	9F0300-25T	9F0300-25HT
3-1/2"	25.00	17.00	4.00	3.54	9F0350-25T	9F0350-25HT
4"	25.00	17.00	4.00	4.04	9F0400-25T	9F0400-25HT
5"	25.00	17.00	4.00	5.04	9F0500-25T	9F0500-25HT
6"	25.00	17.00	4.00	6.04	9F0600-25T	9F0600-25HT
8"	25.00	17.00	4.00	8.04	9F0800-25T	9F0800-25HT
10"	25.00	17.00	4.00	10.04	9F1000-25T	9F1000-25HT
12"	25.00	17.00	4.00	12.04	9F1200-25T	9F1200-25HT

TYPE 9P - FLEX HOSE

SIZE	OVERALL LENGTH	LIVE LENGTH	CUFF LENGTH	CUFF I.D.	W/ C/S CUFF	W/ S/S CUFF
1-1/2"	20.00	12.00	4.00	1.92	9F0150-20P	9F0150-20HP
2"	20.00	12.00	4.00	2.42	9F0200-20P	9F0200-20HP
2-1/2"	20.00	12.00	4.00	2.92	9F0250-20P	9F0250-20HP
3"	25.00	17.00	4.00	3.54	9F0300-25P	9F0300-25HP
3-1/2"	25.00	17.00	4.00	4.04	9F0350-25P	9F0350-25HP
4"	25.00	17.00	4.00	4.54	9F0400-25P	9F0400-25HP
5"	25.00	17.00	4.00	5.62	9F0500-25P	9F0500-25HP
6"	25.00	17.00	4.00	6.67	9F0600-25P	9F0600-25HP
8"	25.00	17.00	4.00	8.67	9F0800-25P	9F0800-25HP
10"	25.00	17.00	4.00	10.79	9F1000-25P	9F1000-25HP
12"	25.00	17.00	4.00	12.79	9F1200-25P	9F1200-25HP

See pages 4-6 for bellows and flex hose specifications.

OPTIONS:

- Longer / Shorter Lengths
- T-304, T-316, and T-321 Stainless Steel Cuffs
- Inconel 625 and Alloy "X" Bellows
- Available Without Slots On Request.

NOTES:

- Standard Flow Liner Diameter limits Lateral Offset to 3/8". For Increased Offset, Liner O.D. Must be Reduced.
- Internal Flow Liners are Required if Flow Conditions are Equal or Greater Than the Following:

6" and Under (Gas / Steam) - 4ft/sec/inch of Diameter
8" and Over (Gas / Steam) - 25ft/sec.

Contact One Of Our Product Specialists For Assistance

