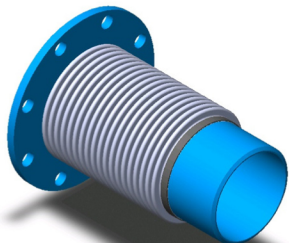


# VIBRATION ISOLATORS

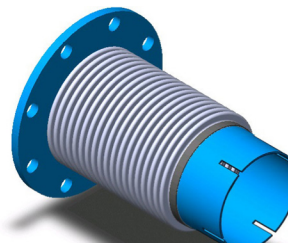
## TYPE 4 - FIXED FLANGE X BEVELED WELD END

T-321 STAINLESS STEEL BELLOWS / FLEX  
125/150# ANSI FLANGE, A-36 STEEL ONE END  
SCH. 40, CARBON STEEL BEVELED WELD END ONE END.



## TYPE 5 - FIXED FLANGE X SLOTTED CUFF

T-321 STAINLESS STEEL BELLOWS / FLEX  
125/150# ANSI FLANGE, A-36 STEEL  
CARBON STEEL TUBE / PIPE SIZE SLOTTED CUFF



### TYPE 4 - MULTI-PLY BELLOWS

SIZE	OVERALL LENGTH	LIVE LENGTH	O.D.	BOLT CIRCLE	# OF HOLES	HOLE DIA	PART NUMBER
2"	9.00	6.00	6.00	4.75	4	0.75	4M0200-9
2-1/2"	9.00	6.00	7.00	5.50	4	0.75	4M0250-9
3"	12.00	9.00	7.50	6.00	4	0.75	4M0300-12
3-1/2"	12.00	9.00	8.50	7.00	8	0.75	4M0350-12
4"	12.00	9.00	9.00	7.50	8	0.75	4M0400-12
5"	12.00	9.00	10.00	8.50	8	0.88	4M0500-12
6"	12.00	9.00	11.00	9.50	8	0.88	4M0600-12
8"	12.00	9.00	13.50	11.75	8	0.88	4M0800-12

### TYPE 5 - MULTI-PLY BELLOWS

SIZE	OVERALL LENGTH	LIVE LENGTH	O.D.	BOLT CIRCLE	CUFF LENGTH	CUFF I.D.	PART NUMBER
2"	10.50	6.00	6.00	4.75	4.00	2.04	5M0200-10.5T
2-1/2"	10.50	6.00	7.00	5.50	4.00	2.54	5M0250-10.5T
3"	13.50	9.00	7.50	6.00	4.00	3.04	5M0300-13.5T
3-1/2"	13.50	9.00	8.50	7.00	4.00	3.54	5M0350-13.5T
4"	13.50	9.00	9.00	7.50	4.00	4.04	5M0400-13.5T
5"	13.50	9.00	10.00	8.50	4.00	5.04	5M0500-13.5T
6"	13.50	9.00	11.00	9.50	4.00	6.04	5M0600-13.5T
8"	13.50	9.00	13.50	11.75	4.00	8.04	5M0800-13.5T
10"	13.50	9.00	16.00	14.25	4.00	10.04	5M1000-13.5T
12"	13.50	9.00	19.00	17.00	4.00	12.04	5M1200-13.5T

### TYPE 4 - SINGLE-PLY BELLOWS

SIZE	OVERALL LENGTH	LIVE LENGTH	O.D.	BOLT CIRCLE	# OF HOLES	HOLE DIA	PART NUMBER
2"	9.00	6.00	6.00	4.75	4	0.75	4S0200-9
2-1/2"	9.00	6.00	7.00	5.50	4	0.75	4S0250-9
3"	12.00	9.00	7.50	6.00	4	0.75	4S0300-12
3-1/2"	12.00	9.00	8.50	7.00	8	0.75	4S0350-12
4"	12.00	9.00	9.00	7.50	8	0.75	4S0400-12
5"	12.00	9.00	10.00	8.50	8	0.88	4S0500-12
6"	12.00	9.00	11.00	9.50	8	0.88	4S0600-12
8"	12.00	9.00	13.50	11.75	8	0.88	4S0800-12

### TYPE 5 - SINGLE-PLY BELLOWS

SIZE	OVERALL LENGTH	LIVE LENGTH	O.D.	BOLT CIRCLE	CUFF LENGTH	CUFF I.D.	PART NUMBER
2"	10.50	6.00	6.00	4.75	4.00	2.04	5S0200-10.5T
2-1/2"	10.50	6.00	7.00	5.50	4.00	2.54	5S0250-10.5T
3"	13.50	9.00	7.50	6.00	4.00	3.04	5S0300-13.5T
3-1/2"	13.50	9.00	8.50	7.00	4.00	3.54	5S0350-13.5T
4"	13.50	9.00	9.00	7.50	4.00	4.04	5S0400-13.5T
5"	13.50	9.00	10.00	8.50	4.00	5.04	5S0500-13.5T
6"	13.50	9.00	11.00	9.50	4.00	6.04	5S0600-13.5T
8"	13.50	9.00	13.50	11.75	4.00	8.04	5S0800-13.5T
10"	13.50	9.00	16.00	14.25	4.00	10.04	5S1000-13.5T
12"	13.50	9.00	19.00	17.00	4.00	12.04	5S1200-13.5T

### TYPE 4 - FLEX HOSE

SIZE	OVERALL LENGTH	LIVE LENGTH	O.D.	BOLT CIRCLE	# OF HOLES	HOLE DIA	PART NUMBER
2"	15.00	12.00	6.00	4.75	4	0.75	4F0200-15
2-1/2"	15.00	12.00	7.00	5.50	4	0.75	4F0250-15
3"	20.00	17.00	7.50	6.00	4	0.75	4F0300-20
3-1/2"	20.00	17.00	8.50	7.00	8	0.75	4F0350-20
4"	20.00	17.00	9.00	7.50	8	0.75	4F0400-20
5"	20.00	17.00	10.00	8.50	8	0.88	4F0500-20
6"	20.00	17.00	11.00	9.50	8	0.88	4F0600-20
8"	20.00	17.00	13.50	11.75	8	0.88	4F0800-20

### TYPE 5 - FLEX HOSE

SIZE	OVERALL LENGTH	LIVE LENGTH	O.D.	BOLT CIRCLE	CUFF LENGTH	CUFF I.D.	PART NUMBER
2"	16.50	12.00	6.00	4.75	4.00	2.04	5F0200-16.5T
2-1/2"	16.50	12.00	7.00	5.50	4.00	2.54	5F0250-16.5T
3"	21.50	17.00	7.50	6.00	4.00	3.04	5F0300-21.5T
3-1/2"	21.50	17.00	8.50	7.00	4.00	3.54	5F0350-21.5T
4"	21.50	17.00	9.00	7.50	4.00	4.04	5F0400-21.5T
5"	21.50	17.00	10.00	8.50	4.00	5.04	5F0500-21.5T
6"	21.50	17.00	11.00	9.50	4.00	6.04	5F0600-21.5T
8"	21.50	17.00	13.50	11.75	4.00	8.04	5F0800-21.5T
10"	21.50	17.00	16.00	14.25	4.00	10.04	5F1000-21.5T
12"	21.50	17.00	19.00	17.00	4.00	12.04	5F1200-21.5T

#### OPTIONS:

- Longer / Shorter Lengths
- Increasing / Reducing Flanges
- Special Drilled / Metric Flanges
- Cummins and Detroit Flanges
- T-304, T-316, and T-321 Stainless Steel Flanges
- Inconel 625 and Alloy "X" Bellows

#### NOTES:

- Standard Flow Liner Diameter limits Lateral Offset to 3/8". For Increased Offset, Liner O.D. Must be Reduced.
- Internal Flow Liners are Required if Flow Conditions are Equal or Greater Than the Following:

6" and Under (Gas / Steam) - 4ft/sec/inch of Diameter  
8" and Over (Gas / Steam) - 25ft/sec.

Part Numbers Shown are with Tube Size Slotted Cuff ( T ). Use "P" at the End of the Part Number for Pipe Size Slotted Cuff instead of "T".

Contact One Of Our Product Specialists For Assistance

See pages 4-6 for bellows and flex hose specifications.

