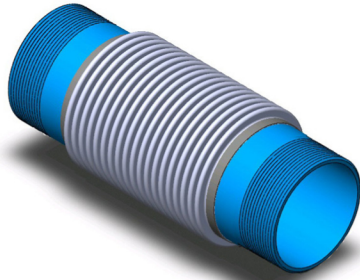


VIBRATION ISOLATORS

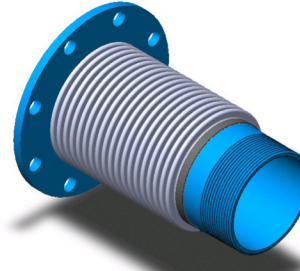
TYPE 2 - MALE NPT X MALE NPT

T-321 STAINLESS STEEL BELLOWS / FLEX
SCHED. 40 MALE NPT EACH END



TYPE 3 - FIXED FLANGE X MALE NPT

T-321 STAINLESS STEEL BELLOWS / FLEX
125/150# ANSI FLANGE, A-36 STEEL ONE END
SCHED. 40 CARBON STEEL MALE NPT ONE END



TYPE 2 - MULTI-PLY BELLOWS

SIZE	OVERALL LENGTH	LIVE LENGTH	NPT I.D.	W/ C/S NPT	W/ S/S NPT
1"	10.00	6.00	1.00	2M0100-10	2M0100-10H
1-1/4"	10.00	6.00	1.25	2M0125-10	2M0125-10H
1-1/2"	10.00	6.00	1.50	2M0150-10	2M0150-10H
2"	11.00	6.00	2.00	2M0200-11	2M0200-11H
2-1/2"	12.00	6.00	2.50	2M0250-12	2M0250-12H
3"	15.00	9.00	3.00	2M0300-15	2M0300-15H
3-1/2"	17.00	9.00	3.50	2M0350-17	2M0350-17H
4"	17.00	9.00	4.00	2M0400-17	2M0400-17H
5"	17.00	9.00	5.00	2M0500-17	2M0500-17H
6"	17.00	9.00	6.00	2M0600-17	2M0600-17H
8"	17.00	9.00	8.00	2M0800-17	2M0800-17H

TYPE 3 - MULTI-PLY BELLOWS

SIZE	OVERALL LENGTH	LIVE LENGTH	O.D.	BOLT CIRCLE	# OF HOLES	HOLE DIA.	PART NUMBER
2"	9.00	6.00	6.00	4.75	4	0.75	3M0200-9
2-1/2"	9.50	6.00	7.00	5.50	4	0.75	3M0250-9.5
3"	12.50	9.00	7.50	6.00	4	0.75	3M0300-12.5
3-1/2"	13.50	9.00	8.50	7.00	8	0.75	3M0350-13.5
4"	13.50	9.00	9.00	7.50	8	0.75	3M0400-13.5
5"	13.50	9.00	10.00	8.50	8	0.88	3M0500-13.5
6"	13.50	9.00	11.00	9.50	8	0.88	3M0600-13.5
8"	13.50	9.00	13.50	11.75	8	0.88	3M0800-13.5

TYPE 2 - SINGLE-PLY BELLOWS

SIZE	OVERALL LENGTH	LIVE LENGTH	NPT I.D.	W/ C/S NPT	W/ S/S NPT
1"	10.00	6.00	1.00	2S0100-10	2S0100-10H
1-1/4"	10.00	6.00	1.25	2S0125-10	2S0125-10H
1-1/2"	10.00	6.00	1.50	2S0150-10	2S0150-10H
2"	11.00	6.00	2.00	2S0200-11	2S0200-11H
2-1/2"	12.00	6.00	2.50	2S0250-12	2S0250-12H
3"	15.00	9.00	3.00	2S0300-15	2S0300-15H
3-1/2"	17.00	9.00	3.50	2S0350-17	2S0350-17H
4"	17.00	9.00	4.00	2S0400-17	2S0400-17H
5"	17.00	9.00	5.00	2S0500-17	2S0500-17H
6"	17.00	9.00	6.00	2S0600-17	2S0600-17H
8"	17.00	9.00	8.00	2S0800-17	2S0800-17H

TYPE 3 - SINGLE-PLY BELLOWS

SIZE	OVERALL LENGTH	LIVE LENGTH	O.D.	BOLT CIRCLE	# OF HOLES	HOLE DIA.	PART NUMBER
2"	9.00	6.00	6.00	4.75	4	0.75	3S0200-9
2-1/2"	9.50	6.00	7.00	5.50	4	0.75	3S0250-9.5
3"	12.50	9.00	7.50	6.00	4	0.75	3S0300-12.5
3-1/2"	13.50	9.00	8.50	7.00	8	0.75	3S0350-13.5
4"	13.50	9.00	9.00	7.50	8	0.75	3S0400-13.5
5"	13.50	9.00	10.00	8.50	8	0.88	3S0500-13.5
6"	13.50	9.00	11.00	9.50	8	0.88	3S0600-13.5
8"	13.50	9.00	13.50	11.75	8	0.88	3S0800-13.5

TYPE 2 - FLEX HOSE

SIZE	OVERALL LENGTH	LIVE LENGTH	NPT I.D.	W/ C/S NPT	W/ S/S NPT
1"	16.00	12.00	1.00	2F0100-16	2F0100-16H
1-1/4"	16.00	12.00	1.25	2F0125-16	2F0125-16H
1-1/2"	16.00	12.00	1.50	2F0150-16	2F0150-16H
2"	17.00	12.00	2.00	2F0200-17	2F0200-17H
2-1/2"	18.00	12.00	2.50	2F0250-18	2F0250-18H
3"	23.00	17.00	3.00	2F0300-23	2F0300-23H
3-1/2"	25.00	17.00	3.50	2F0350-25	2F0350-25H
4"	25.00	17.00	4.00	2F0400-25	2F0400-25H
5"	25.00	17.00	5.00	2F0500-25	2F0500-25H
6"	25.00	17.00	6.00	2F0600-25	2F0600-25H
8"	25.00	17.00	8.00	2F0800-25	2F0800-25H

TYPE 3 - FLEX HOSE

SIZE	OVERALL LENGTH	LIVE LENGTH	O.D.	BOLT CIRCLE	# OF HOLES	HOLE DIA.	PART NUMBER
2"	15.00	12.00	6.00	4.75	4	0.75	3F0200-15
2-1/2"	15.50	12.00	7.00	5.50	4	0.75	3F0250-15.5
3"	20.50	17.00	7.50	6.00	4	0.75	3F0300-20.5
3-1/2"	21.50	17.00	8.50	7.00	8	0.75	3F0350-21.5
4"	21.50	17.00	9.00	7.50	8	0.75	3F0400-21.5
5"	21.50	17.00	10.00	8.50	8	0.88	3F0500-21.5
6"	21.50	17.00	11.00	9.50	8	0.88	3F0600-21.5
8"	21.50	17.00	13.50	11.75	8	0.88	3F0800-21.5

See pages 4-6 for bellows and flex hose specifications.

OPTIONS:

- Longer / Shorter Lengths
- Increasing / Reducing Flanges
- Special Drilled / Metric Flanges
- Cummins and Detroit Flanges
- T-304, T-316, and T-321 Stainless Steel Flanges
- Inconel 625 and Alloy "X" Bellows

NOTES:

- Standard Flow Liner Diameter limits Lateral Offset to 3/8". For Increased Offset, Liner O.D. Must be Reduced.
- Internal Flow Liners are Required if Flow Conditions are Equal or Greater Than the Following:

6" and Under (Gas / Steam) - 4ft/sec/inch of Diameter
8" and Over (Gas / Steam) - 25ft/sec.

Contact One Of Our Product Specialists For Assistance

