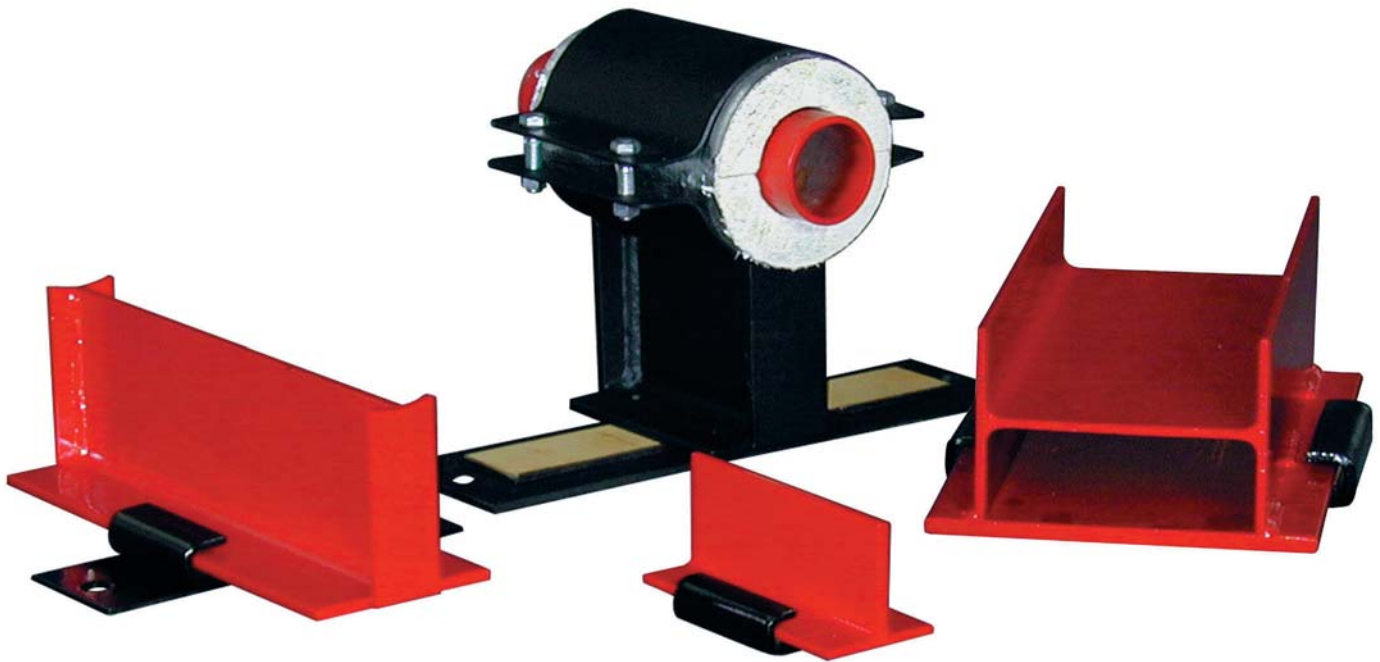




PTFE PIPE SLIDES



Pipe Slides

DME Incorporated slides are designed to ensure positive pipe alignment. This is accomplished by restricting lateral pipe movement while allowing for movement along the axis of the pipe. When expansion devices such as pipe loops, bellows joints and slip joints are used, pipe slides ensure proper operation of the expansion device and protect the integrity of the pipe.

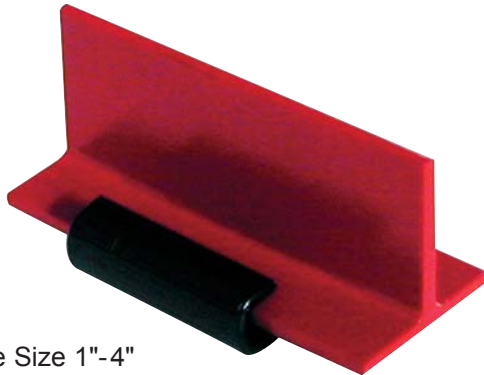
A pipe slide assembly consists of an anchored base and a sliding section that is attached to the pipe. The slide moves over the base as the pipe expands and contracts.

- **Pipe slide assemblies are designed for pipe support as well as lateral and axial movement.**
- **Assemblies are fabricated using low-friction bearing surfaces to minimize stress on pipe and support structures.**
- **Self-lubricating, chemically-inert and maintenance-free.**

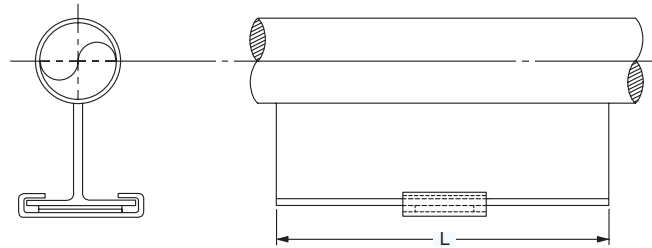


PTFE Slide/Guide Assemblies

WELDED SERIES

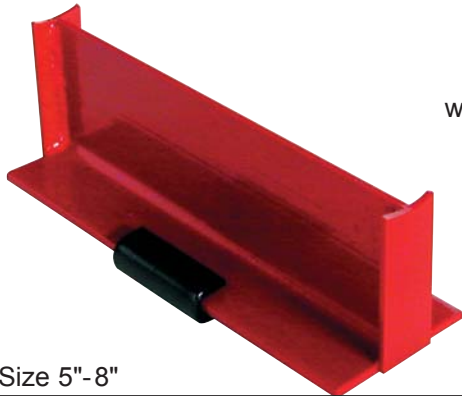


Pipe Size 1"-4"



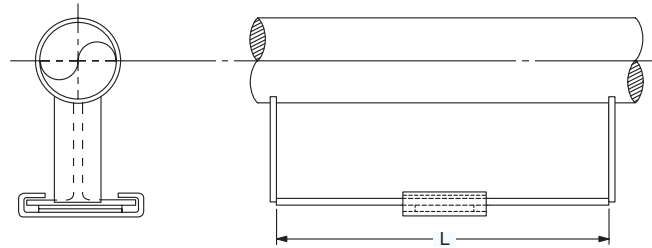
435 Series

Max. Axial Movement	Model No.	L	Max. Insul. Thickness
4"	4351-4383	6"	2"
10"	4352-4383	12"	2"



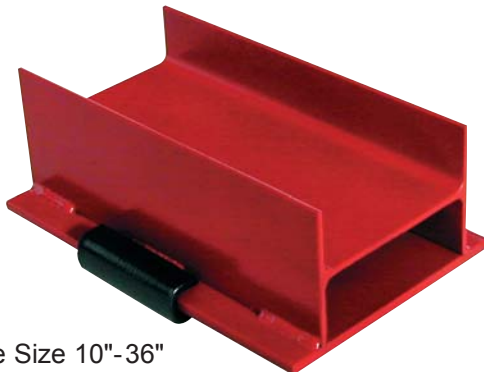
Pipe Size 5"-8"

Available with or without end plates.

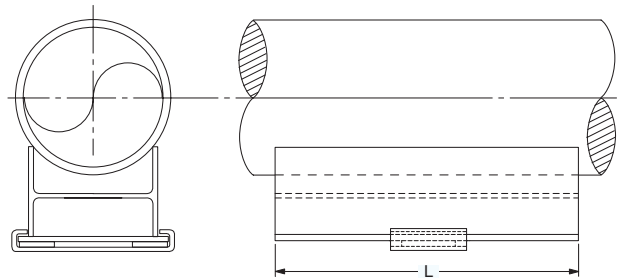


280 Series

Max. Axial Movement	Model No.	L	Max. Insul. Thickness
4"	2801-4383	6"	3 1/2"
10"	2802-4383	12"	3 1/2"

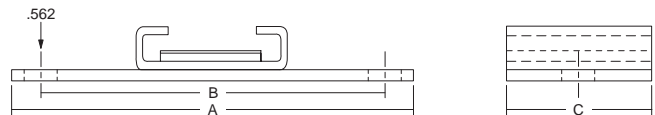


Pipe Size 10"-36"



437 Series

Pipe Size	Model No.	L	Max. Axial Movement
10"-36"	4371-4384	6"	4"
10"-36"	4372-4384	12"	10"



Type 3 Bolt Down Base

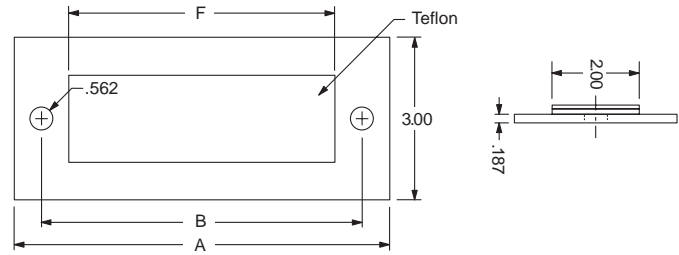
Base No.	A	B	C
4383B (435 Series)	8 1/2"	7 1/4"	3"
4383D (280 Series)	8 1/2"	7 1/4"	3"
4384B (437 Series)	14 1/2"	13 1/4"	4"

For bolted applications use above Part No. when ordering.



PTFE Slide/Support Assembly

Series 438 base plates can be combined with Series 435, 280 and 437 slides when lateral movement exists in a piping system.



Model No.	A	B	F
xxxx-4381	8 1/2"	7"	6"
xxxx-4382	14 1/2"	13"	12"

PTFE Pipe Slide Assemblies

DME Incorporated PTFE pipe slide assemblies are designed to support the pipe and provide for lateral and axial movement due to thermal expansion and contraction of the piping system.

Slide bases are fabricated using the PTFE slide bearings to provide a low coefficient of friction, minimizing frictional stress on the pipe and support structure.

The maximum load on the pipe slides is based on using a PTFE width of 2" for the slide plate and a 70°F temperature. For a different temperature at the bearing surface, multiply the maximum load rating by the following factor:

Temperature °F	Factor
≤ 70	1.00
100	.85
200	.55
300	.40
400	.25

Slides are fabricated carbon steel supports with **Heat Cured PTFE Modified Coating**.

Dry Film Lubricant formulated with PTFE to provide excellent lubrication, fluid resistance, and corrosion protection. This Heat Cured material prevents corrosion, galling, seizing, and fretting.

Features / Benefits

- Provides excellent lubrication.
- Provides heavy duty service as an exterior protective coating for all metals including magnesium.
- Offers resistance to chemical corrosion, solvents, abrasion and impact.
- Exhibits good thermal stability.

Cross-Reference Alternatives

Pre-Insulated Supports



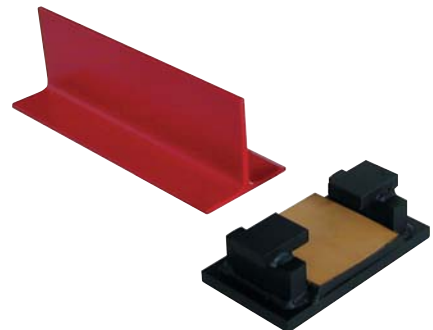
Pipe Shields / Rilco

DME Incorporated manufactures equals and alternatives to many of these brand pipe slides:

- Rilco
- F&S
- Elcen
- Pipe Shields
- Broat
- Grinnell
- NPS
- Piping Technologies

For more information, call us at **(562) 921-0464** or visit our Web site at www.dmeexpansionjoints.com.

Teflon to Stainless Slides and Guides



Grinnell Fig. 257

Special Applications

Slides - Guides - Anchors

280 SLIDE SERIES



256 HINGED SERIES



ANCHOR CLAMP



257 SLIDE SERIES



**BASEBOARD
FIN-TUBE GUIDE**



**BASEBOARD
ANCHOR**



DME INCORPORATED

14001 Marquardt Avenue
Santa Fe Springs, CA 90670
Toll Free: 1-888-4DMEINC
Tel: (562) 921-0464 • Fax (562) 802-7489
URL: www.dmeexpansionjoints.com
Email: info@dmeexpansionjoints.com