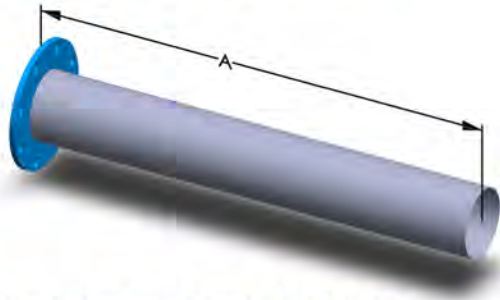


PRE-FAB. EXHAUST ASSEMBLIES

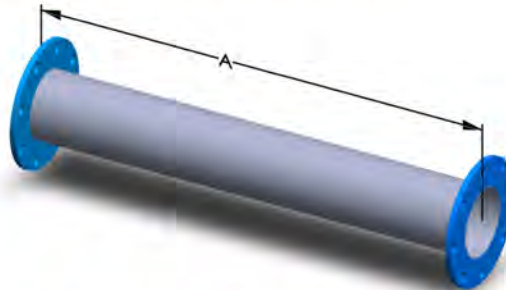
STYLE 60 - TUBE ASSEMBLY FLANGED ONE END

EXHAUST TUBE FACTORY WELDED TO 125/150# ANSI FLANGE ONE END.



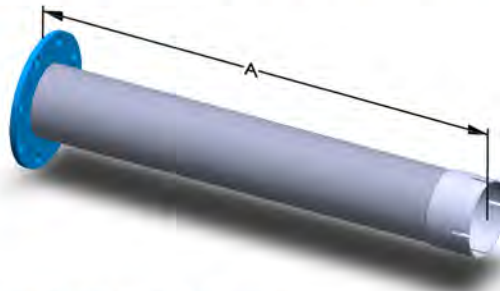
STYLE 61 - TUBE ASSEMBLY FLANGED EACH END

EXHAUST TUBE FACTORY WELDED TO 125/150# ANSI FLANGE EACH END.



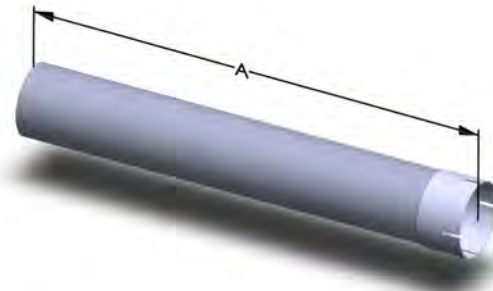
STYLE 62 - FLANGED TUBE ASSEMBLY WITH INTEGRAL CUFF

EXHAUST TUBE WITH INTEGRAL SLOTTED CUFF FACTORY WELDED TO 125/150# ANSI FLANGE ONE END.



STYLE 63 - TUBE WITH INTEGRAL CUFF

EXHAUST TUBE WITH INTEGRAL SLOTTED CUFF ONE END.



NOTES:

- Reducing Flanges Available on Request.
- Schedule 10 and Schedule 40 Pipe Assemblies can be Fabricated on Request.
- Stainless Steel Available on Request.

Contact One Of Our Product Specialists For Assistance

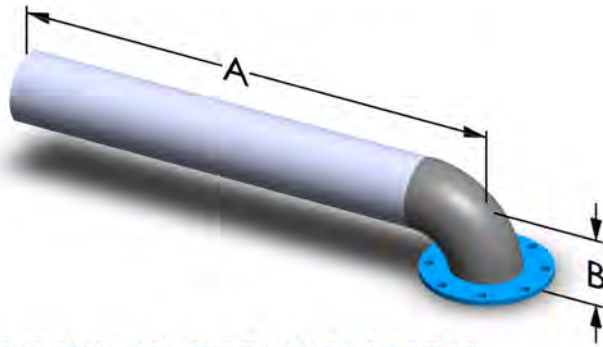
A - SPECIFY LENGTH IN INCHES



PRE-FAB. EXHAUST ASSEMBLIES

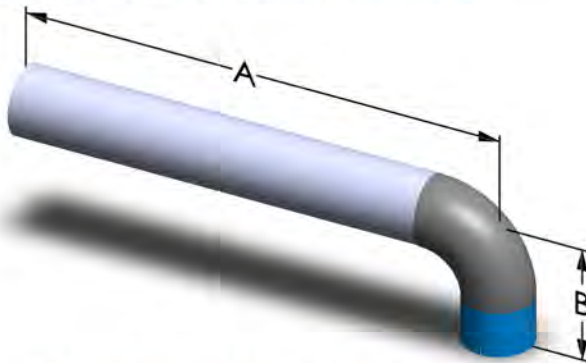
STYLE 64 - 90 DEGREE FLANGED TUBE ASSEMBLY

EXHAUST TUBE FACTORY WELDED TO SHORT RADIUS 90 DEGREE ELBOW AND 125/150# ANSI FLANGE



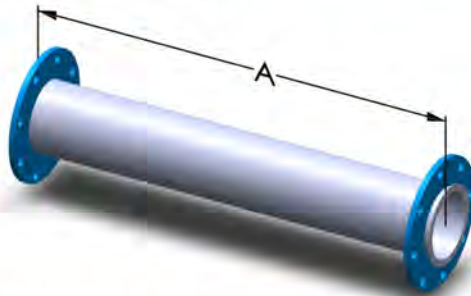
STYLE 65 - 90 DEGREE TUBE WITH SLOTTED CUFF ONE END

EXHAUST TUBE FACTORY WELDED TO SHORT RADIUS 90 DEGREE ELBOW AND SLOTTED CUFF



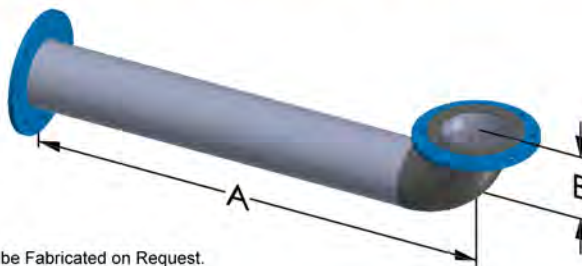
STYLE 66 - TUBE ASSEMBLY WITH FIXED X FLOATING FLANGES

EXHAUST TUBE FACTORY WELDED WITH FIXED BY FLOATING 125/150# ANSI FLANGES



STYLE 67 - 90 DEGREE TUBE ASSEMBLY WITH FIXED X FLOATING FLANGES

EXHAUST TUBE FACTORY WELDED TO SHORT RADIUS 90 DEGREE ELBOW AND WITH FIXED BY FLOATING 125/150# ANSI FLANGE



NOTES:

- Reducing Flanges Available on Request.
- Schedule 10 and Schedule 40 Pipe Assemblies can be Fabricated on Request.
- Stainless Steel Available on Request.

Contact One Of Our Product Specialists For Assistance

A & B - SPECIFY LENGTHS IN INCHES

